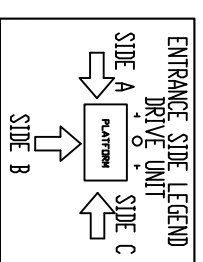


TABLE 1- MAST HEIGHT*

Max. Travel mm (Inches)	Extension Height mm (Inches)			Mast Height with 4.188" CAP mm Inches
1219 (48")	1			2748 108.188
1524 (60")	1		1	3053 120.188
1829 (72")	1		1	3662 144.188
2438 (96")	1	1		4221 166.188
2743 (108")	1	1	1	4475 176.188
3048 (120")	1	1	1	4882 192.188
3657 (144")	2		1	5440 214.188
4267 (168")	2	1		6050 238.188
4877 (192")	2	1	1	6609 260.188
5486 (216")	3			7269 286.188
6096 (240")	3		1	7828 308.188
2706 (264")	3	1		8438 332.188
7010 (276")	3	1	1	8692 342.188

*EXAMPLE TABLE WITH 3' PIT, DIMENSIONS VARY WITH TRAVEL



DOOR SWING

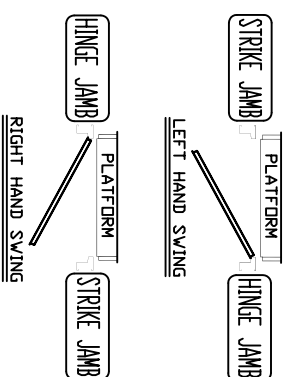
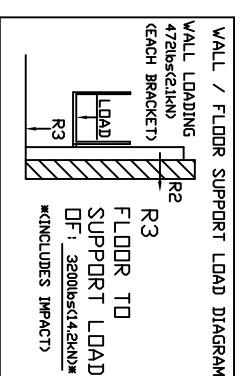
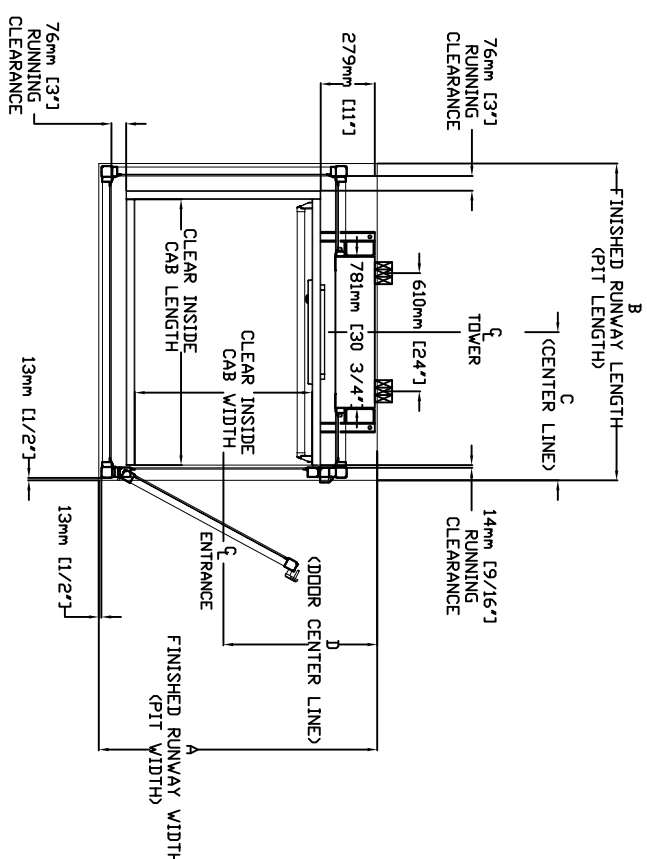


TABLE 2 - ENCLOSURE DIMENSION

CLEAR INSIDE CAB WIDTH	CLEAR INSIDE CAB LENGTH	A			B			C			D		
		mm	Inches	FINISHED RUNWAY WIDTH	mm	Inches	FINISHED RUNWAY LENGTH	mm	Inches	TOWER CENTER LINE	mm	Inches	DOOR CENTER LINE (IN CASE OF 36" DOOR)
914	36	1219	48	1437	56 9/16	1483	58 3/8	687	27 1/16	784	31 1/4	31 1/4	
914	36	1372	54	1437	56 9/16	1635	64 3/8	784	30 1/16	794	31 1/4	31 1/4	
914	36	1524	60	1437	56 9/16	1788	70 3/8	840	33 1/16	784	31 1/4	31 1/4	



ANCHOR POINTS



GENERAL

INSTALLATION - THE INSTALLATION MUST BE DONE ACCORDANCE WITH 'SAFETY STANDARD FOR PLATFORM LIFTS AND STAIRWAY CHAIRLIFTS' OR 'SAFETY CODE FOR ELEVATORS AND ESCALATORS' IN ALL STATE/ PROVINCIALS OR LOCAL CODES.

PLUMB RUNWAY- DUE TO CLOSE RUNNING CLEARANCES OWNER/ AGENT MUST ENSURE THAT SUPPORT WALL AND PIT (WHERE PROVIDED) ARE LEVEL, PLUMB (-/+ 1/8" (3 mm) AND SQUARE AND ARE IN ACCORDANCE WITH THE DIMENSIONS ON THESE DRAWINGS. MINIMUM OVERHEAD CLEARANCE- OWNER/AGENT MUST ENSURE MINIMUM OVERHEAD CLEARANCE IS IN COMPLIANCE WITH CODES.

CONSTRUCTION SITE- OWNER/AGENT TO PROVIDE ALL MASONRY, CARPENTRY AND DRYWALL WORK AS REQUIRED AND SHALL PATCH AND MAKE GOOD (INCLUDING FINISH PAINTING) ALL AREAS WHERE WALLS/FLOORS MAY REQUIRE TO BE CUT, DRILLED OR ALTERED IN ANY WAY TO PERMIT THE PROPER INSTALLATION OF THE LIFT.

DIMENSIONS- CONTRACTOR/CUSTOMER TO VERIFY ALL DIMENSIONS AND REPORT ANY DISCREPANCIES TO OUR OFFICE IMMEDIATELY.

STRUCTURAL

FLOOR/SUPPORT WALL LOADS-STRUCTURAL ENGINEER TO ASSURE THAT BUILDING AND SHAFT WILL SAFELY SUPPORT ALL LOADS IMPOSED BY THE LIFT EQUIPMENT. REFER TO THE LOAD DIAGRAM ON THIS DRAWING.

MAST TO BE SECURELY FASTENED- WHERE REQUIRED THE MAST MUST BE SECURELY FASTENED TO THE STRUCTURAL SUPPORT WALL. REFER TO WALL / FLOOR SUPPORT LOAD DIAGRAM AND WALL LAG DIMENSIONS ON THIS DRAWING.

ELECTRICAL

GENERAL- ELECTRICAL EQUIPMENT AND WIRING TO COMPLY WITH SECTION 98 OF CSA C221 (CANADA) OR SECTION 620 OF NEC ANSI/NFPA 70 (USA).

POWER SUPPLY-120VAC, 20A, 60HZ, 1PH CIRCUIT THROUGH A FUSE DISCONNECT WITH AUXILIARY CONTACT ON MAIN POWER SUPPLY. PROVIDE TWO 18 AWG CONDUCTORS BETWEEN CONTACT AND CONTROLLER.

LIGHTING-LIGHTING OF 100 LX MIN. AT PLATFORM AND LANDINGS. LIGHTING WITH SWITCH AND ELECTRICAL GFCI OUTLET IN HOISTWAY PIT.

ADDITIONAL BRANCH CIRCUIT-

FOR DOOR OPERATORS (IF EQUIPPED) (120VAC, 15A, 60HZ, 1PH) BRANCH CIRCUIT WITH DISCONNECT FOR VENTILATION SYSTEM (IF EQUIPPED) (120VAC, 15A, 60HZ, 1PH)

ENTRANCES

UPPER LANDING GATES- WHERE REQUIRED, SMOOTH SOLID BARRIERS ARE TO BE SUPPLIED AND INSTALLED ON BOTH SIDES OF ENTRANCE AT UPPER LEVEL AND MUST BE A MINIMUM OF 42" (1067 mm) HIGH. ENTRANCE ASSEMBLY MUST BE IN PLACE PRIOR TO THIS PROVISION.

FASCIA PANEL BELOW UPPER LEVEL ENTRANCE- WHERE REQUIRED, FASCIA PANEL MUST BE FASTENED TO A SOLID WALL AND BE PERPENDICULAR TO THE FLOOR AND WALLS. SUPPORT WALL VOID OF ENTRANCES. ADEQUATE SUPPORT FOR THE FASCIA MUST BE PROVIDED. ENTRANCE ASSEMBLIES MUST BE ADJUSTED TO ALIGN WITH PLATFORM AND INTERLOCK EQUIPMENT. OTHERS TO ALLOW AN ADEQUATE ROUGH OPENING.



THE INFORMATION DISCLOSED HEREIN IS THE EXCLUSIVE PROPERTY OF

CUSTOMER

DATE: 08/24/2009

REVISION: 000

PROJECT:

SCALE: 1:1 08/24/2009

TITLE:

V1504

LOCATION:

DRAWING NO: V1504 PLUS ENCLOSURE

TYPE - 1R

DRAFTER: VINDO C SHEET 1 OF 1